

TYPICAL SS-RCS-MP-10

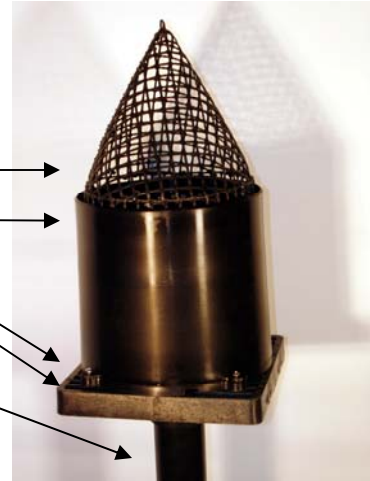
Attitude Technology, Inc. STORMSwitch IOM Installation and Operation of the SS_MP-10

The STORMSwitch is the culmination of over thirty years of experience as the largest manufacturer of rain gauges in the world. Follow these easy instructions and you will experience decades of trouble-free operation from your STORMSwitch.

1.

The following items should be included in the shipping box:

- a. The Anti-fouling Device
- b. The STORMSwitch collector
- c. The STORMSwitch base with 90 feet of cable (attached to the STORMSwitch base)
- d. The STORMSwitch base is mounted to structural foam polyolefin draining base with ultraviolet light inhibitors
- e. The draining base is mounted to a 2" ABS Monopole for strength and UV exposure .



2.

Determine a location for the STORMSwitch keeping in mind the following guidelines:

- a. Make sure the area is open with no overhanging obstructions.
- b. Locate close to the STORMController (within 90 feet if possible).
- c. Mount securely in a space unaffected by other activities.
 - I. Pipe clamps can be used to mount the Mono-Pole to another pipe
 - II. Unitstrut pipe clamps can be used to mount to unistrut

3.

MAKE SURE THE BASE IS LEVEL.

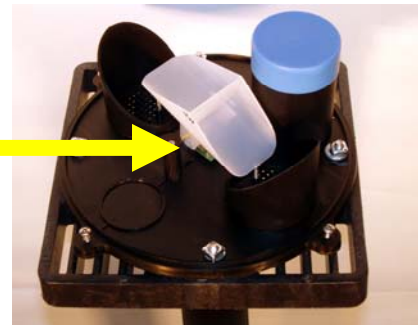
4.

Run the wire from the SS-10 STORMSwitch to the location on where you are going to mount the STORMController. Be careful where you run the cable as to not cut.

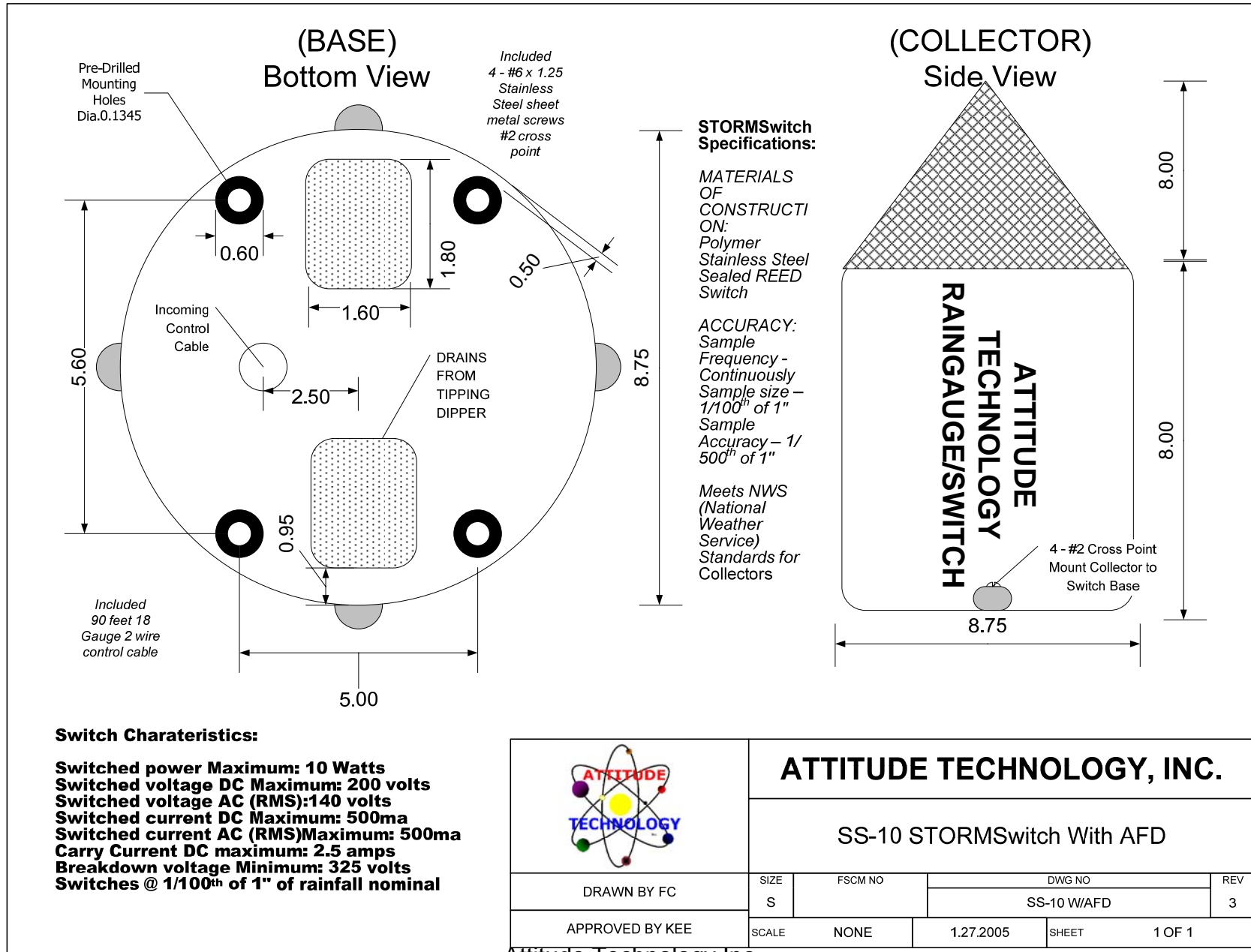
6.

Once a year (more often if in dusty/dirty area) remove the collector and wipe any dust/dirt from the cup of the tipping Dipper (the white two sided cup inside the collector).

Loosen the (4) exposed cross point screws from the top of the collector. Rotate the collector counter clockwise and lift off of the base. When complete with maintenance replace the collector and tighten the (4) cross point screws.
(DO NOT OVER TIGHTEN)




TYPICAL SS-RCS-MP-10



Switch Characteristics:

Switched power Maximum: 10 Watts
Switched voltage DC Maximum: 200 volts
Switched voltage AC (RMS):140 volts
Switched current DC Maximum: 500ma
Switched current AC (RMS)Maximum: 500ma
Carry Current DC maximum: 2.5 amps
Breakdown voltage Minimum: 325 volts
Switches @ 1/100th of 1" of rainfall nominal

| | | | | |
|--------------------------------------------------------------------------------------|----------------------------------|---------|----------------------|-----------------|
|  | ATTITUDE TECHNOLOGY, INC. | | | |
| | SS-10 STORMSwitch With AFD | | | |
| DRAWN BY FC | SIZE S | FSCM NO | DWG NO SS-10 WAFD | REV 3 |
| APPROVED BY KEE | SCALE | NONE | 1.27.2005 | SHEET 1 OF 1 |